



SPECIAL FEATURES

- ECONOMICAL VERSION
- STAINLESS STEEL & PLASTIC CASE OPTIONS
- STAINLESS STEEL MEASURING SYSTEM

APPLICATIONS

IRRIGATION SYSTEMS, AIR CONDITIONING AND REFRIGERATION.

SPECIFICATIONS

STANDARD VERSION : 63 mm & 100 mm

Accuracy	: $\pm 1.6\%$ of F. S.
Ambient temperature	: -20°C to 65°C
Process temperature	: Max. 120°C
Operating Pressure Range	: 75% of Scale Value
Over pressure limit	: 130% of Scale Value

Case & Bezel	: Steel, powder coated / painted
Socket	: AISI 316 SS
Bourdon	: AISI 316L SS
Movement	: AISI 304 SS
Integral Dampening Screw	: AISI 316 SS
Joints	: TIG Argon arc welding

Dial	: Aluminum, black graduation on white background
Pointer	: Black coloured, Slotted, Zero Adjustable.
Window	: Sheet Glass

Temperature effect:

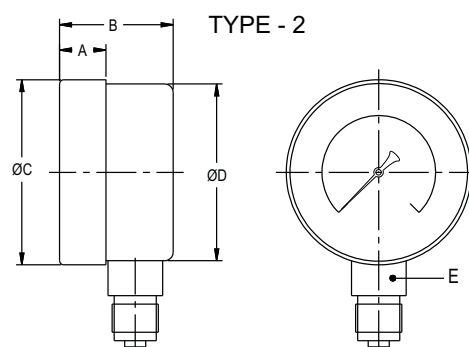
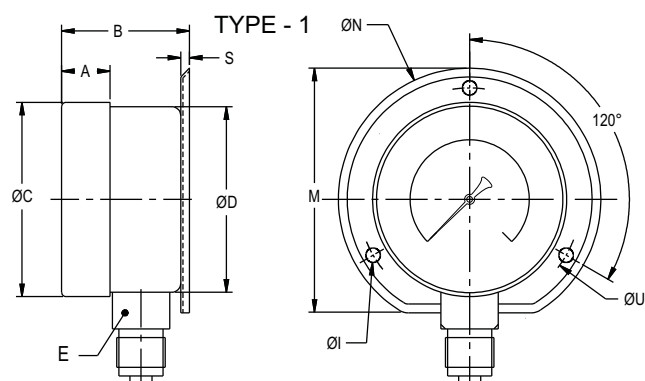
The variation of indication caused by effects of temperature is to be calculated by below formula; which is to be added in the specified accuracy while measurement :-

Formula : $\pm 0.04 \times (t_2 - t_1) \%$ of F. S.

where t_1 = reference temperature ($+20^{\circ}\text{C}$) and t_2 = ambient temperature in $^{\circ}\text{C}$.



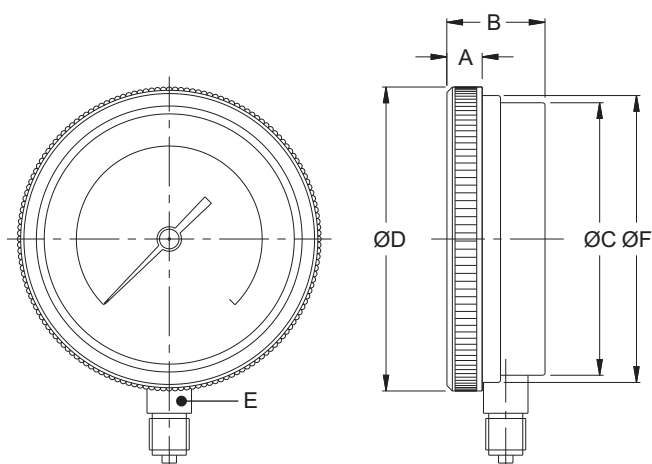
DIMENSIONS - STANDARD VERSION



NS	A	B	ØC	ØD	E	M	S	ØN	ØU	ØI	Weight in gram (With Box)
63	12	30	63	62	14	80	5	88	79	5	160.0
100	13	36	99	97	17	117	1.2	132	118	6	450.0

NS	A	B	ØC	ØD	E	Weight in gram (With Box)
63	12	30	63	62	14	120.0
100	12.5	35.5	100	98	19	390.0

Notes : • Drawings are not to scale. • All Dimensions are in mm. • NS = Nominal Size.



TYPE 2

NS	A	B	ØC	ØF	ØD	E	Weight in gram (With Box)
100	13	37.5	104	109.5	116	SQ. 17	300.0

RANGE TABLE

Note : For temperature scales, please provide refrigerant name.

AMMONIA (WITH TEMPERATURE SCALE)

RANGE (kg/cm ²)	RANGE
-1 to 12.5	-30 inHg to 150 psi
-1 to 16	-30 inHg to 300 psi
-1 to 25	0 to 300 psi

HOW TO ORDER

BASIC MODEL

CODE

NOMINAL SIZE

D **F**
63 mm 100 mm

TYPE OF MOUNTING

- 1 WALL/ SURFACE/ PROJECTION MOUNTING WITH BOTTOM ENTRY
- 2 DIRECT BOTTOM ENTRY*

*Refer option HQ & PT for different MOC of Case & Bezel.

CONNECTION (*Suitable for NS 100 mm)

2NM 1/4" NPT(M) Standard **3BM** 3/8" BSP(M)* **3NM** 3/8" NPT(M)*

RANGE

REFER RANGE TABLE

OPTIONAL EXTRAS

RH CUSTOM DESIGNED DIAL	SX SS TAG PLATE
PW FIVE POINT CALIBRATION CERTIFICATE	TB HELIUM LEAK TEST
HQ PLASTIC CASE & BEZEL (SCREWED TYPE)*	PT AISI 304 SS CASE & BEZEL (PUSH FIT TYPE)

* FOR NS 100 mm

Ordering Example: **BN - X - X - XXX - (-1/16 kg/cm²) - XX**

FOR OTHER OPTIONAL ITEMS, PLEASE CONTACT FACTORY FOR DELIVERY AND MINIMUM QUANTITY OF ORDER.

Example

BN

X

X

XXX

**-1/16
kg/cm²**

XX

Note : Specifications and dimensions given in this product catalogue represents the state of engineering at the time of printing.
Modifications may take place and materials specified may be replaced by others without prior notice.